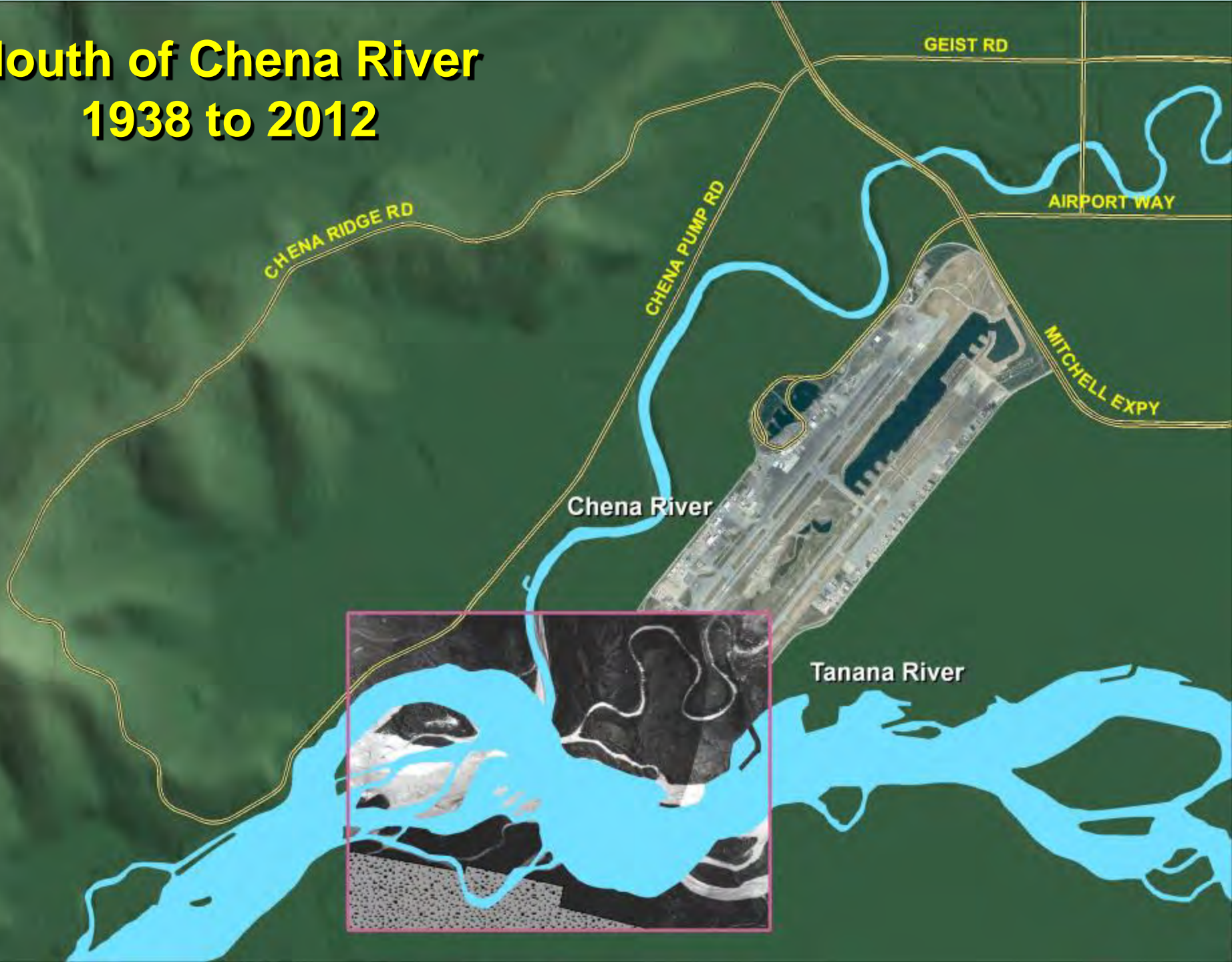
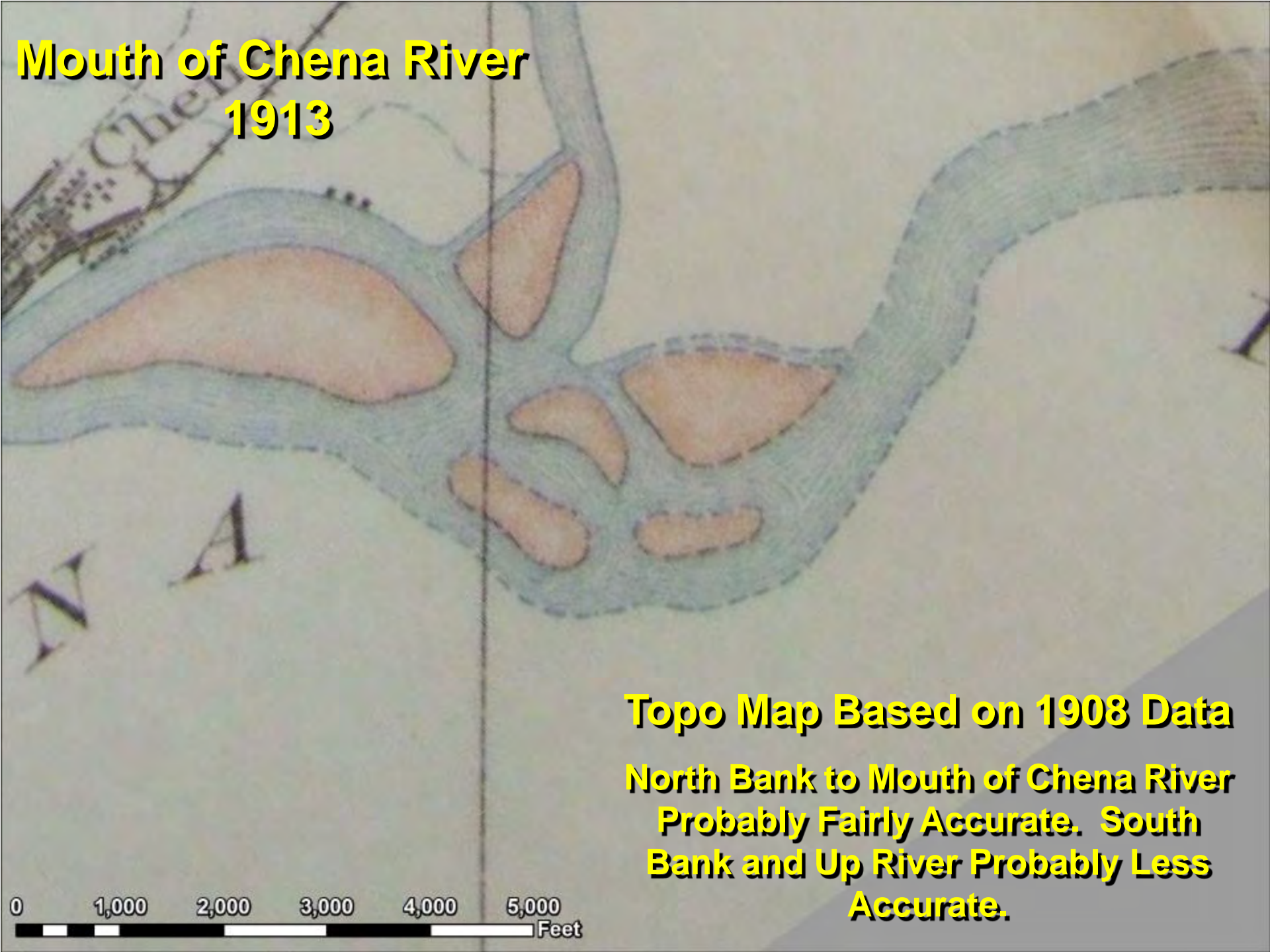


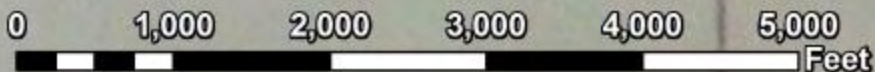
Mouth of Chena River 1938 to 2012



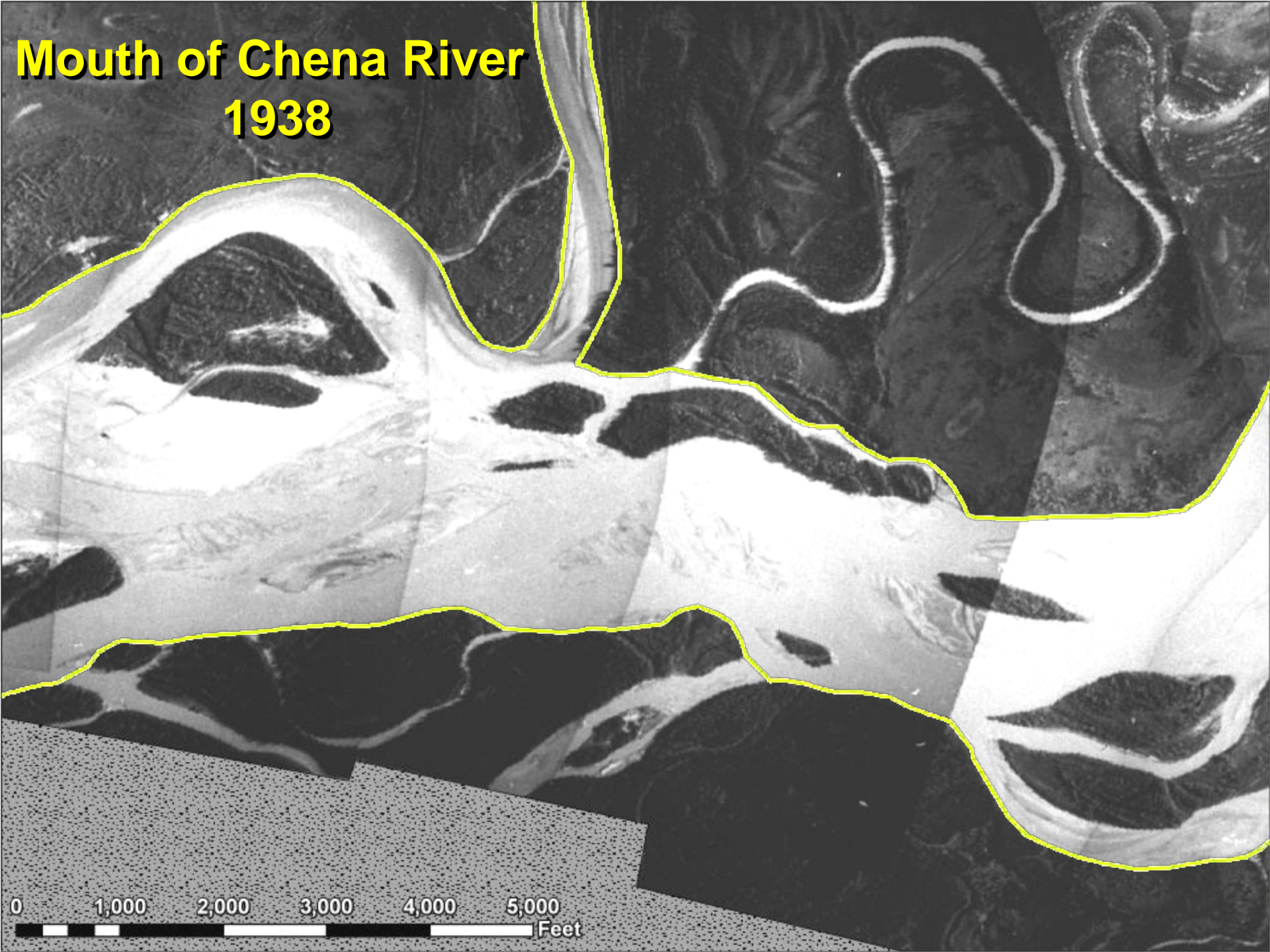
Mouth of Chena River 1913



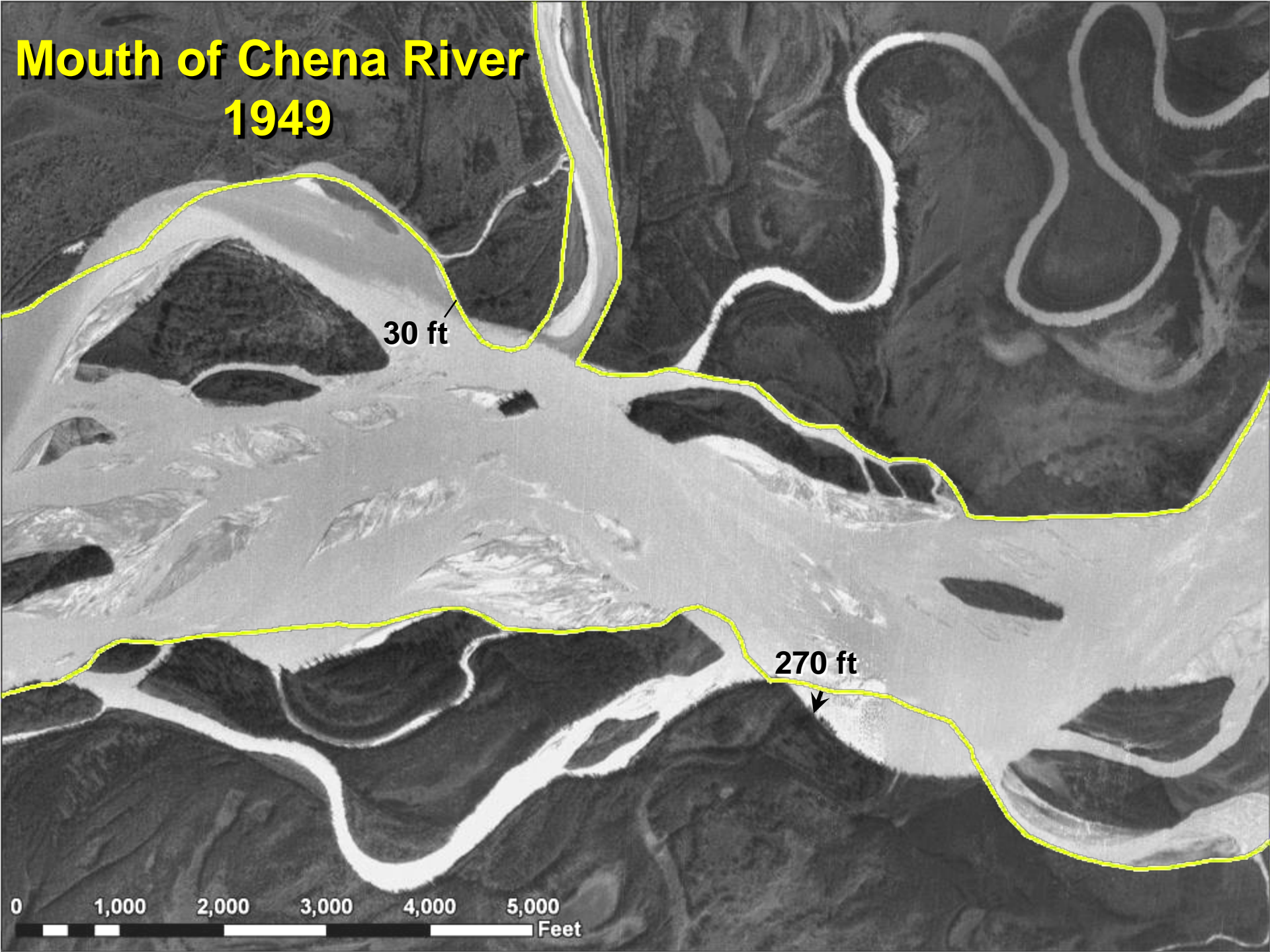
Topo Map Based on 1908 Data
North Bank to Mouth of Chena River
Probably Fairly Accurate. South
Bank and Up River Probably Less
Accurate.



Mouth of Chena River 1938



Mouth of Chena River 1949

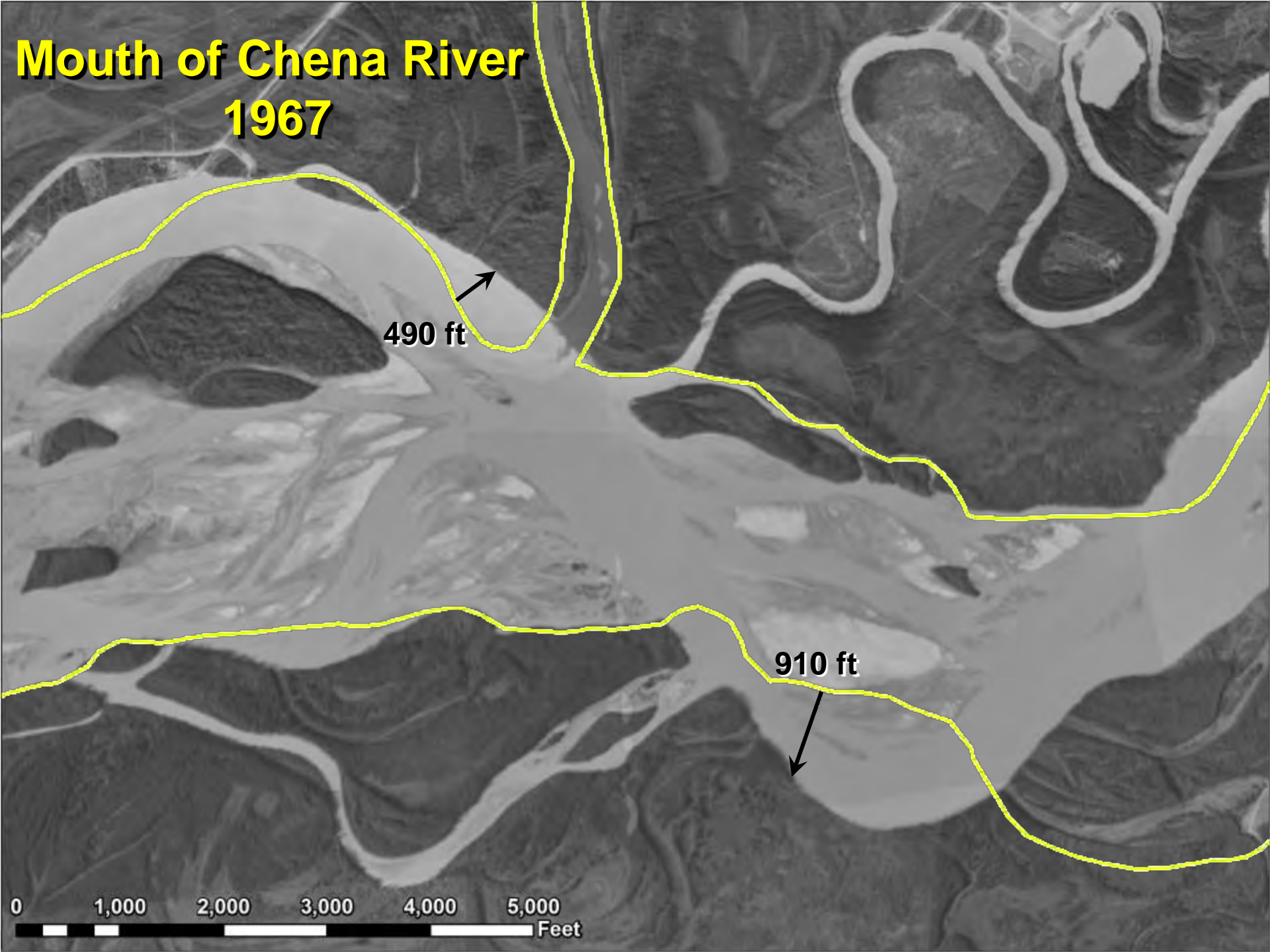


30 ft

270 ft



Mouth of Chena River 1967

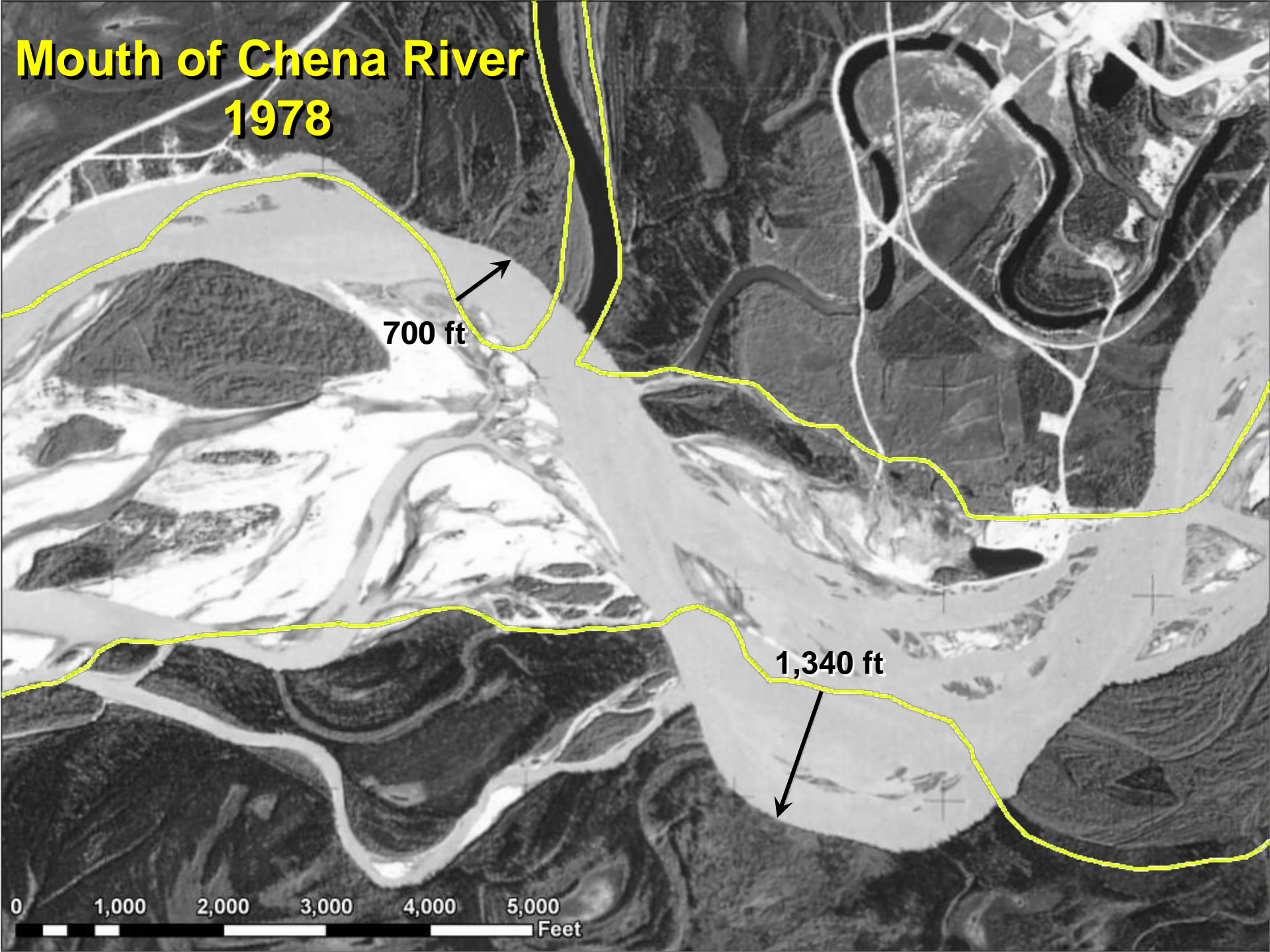


490 ft

910 ft

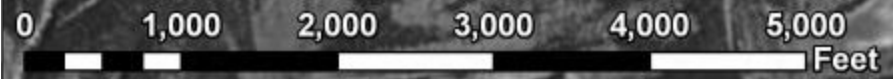
0 1,000 2,000 3,000 4,000 5,000 Feet

Mouth of Chena River 1978



700 ft

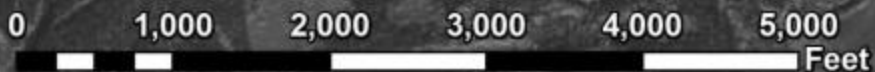
1,340 ft



Mouth of Chena River 1986

910 ft

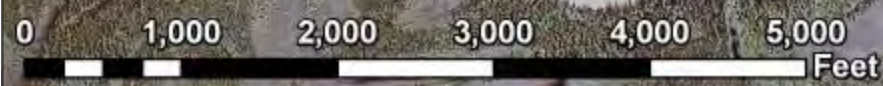
1,370 ft



Mouth of Chena River 2002

1,250 ft

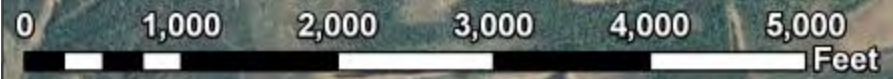
1,760 ft



Mouth of Chena River 2007

1,330 ft

2,050 ft



Mouth of Chena River 2012

1,335 ft

2,050 ft

